

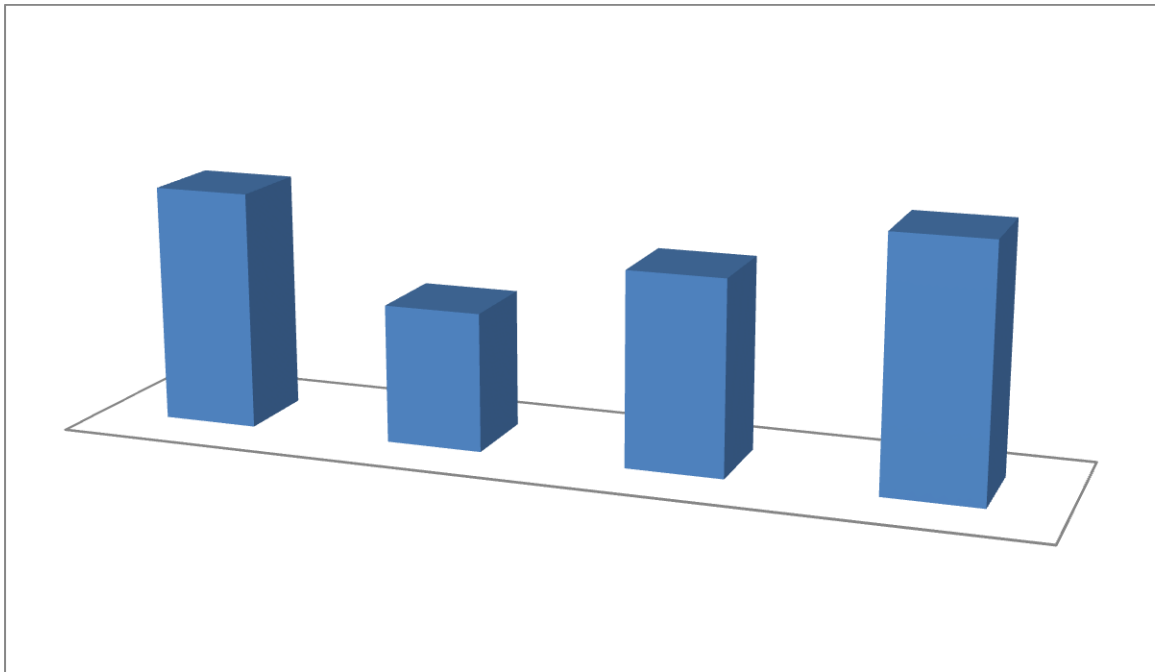
BAR CHART

This is a graph made up of bars of rectangles which are of equal width and whose length are proportional to the score or data they represent

TYPES OF BAR CHART

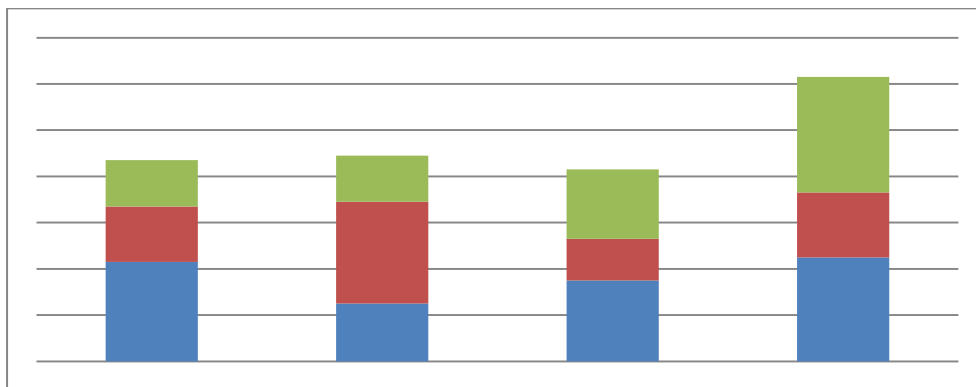
1. Simple bar chart
2. Component bar chart
3. Multiple bar chart

Simple Bar chart : this is a form of bar chart used in representing statistical data which is made up of one score



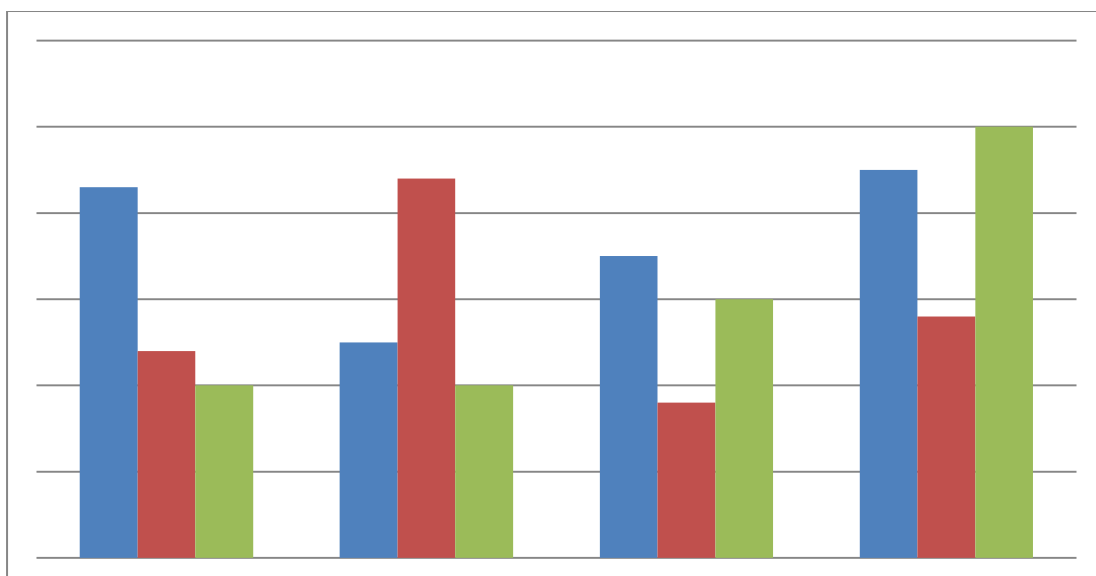
Component bar chart

This is used when data involve more than one variable. The bar is sub-divided into the number given



Multiple bar chart

This is used when there are about three variables or scores given .



Pie chart

Pie is derived from the Greek alphabet called 'P' which gives the impression of that circle is involved in a pie chart.

